



## TRANSFER STATION REFUSE HANDLING BUCKETS

### OVERVIEW

**Dymax Transfer Station and Refuse Buckets** are designed around each application to maximize efficiency when working in refuse and landfill operations. Some models feature a longer flat floor design for loading into trucks below the transfer station floor. The longer floor aids the operators in compacting trash more efficiently while in the truck.

Customize yours' today. We can meet your application requirements.

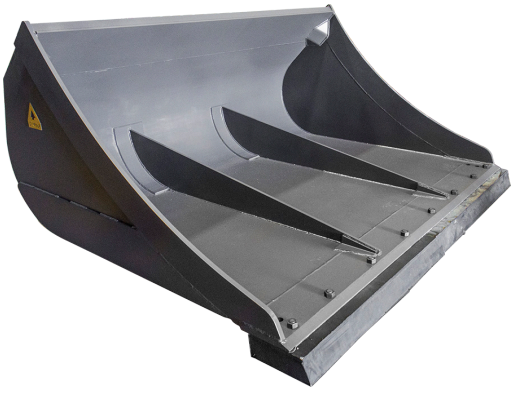
### FEATURES

- 35-50% larger capacity than traditional General Purpose Buckets.
- Replaceable bolt-on cutting edges standard; Optional rubber cutting edge available.
- Some models feature see-through screen moldboard construction, along with interior bucket ribs, to help prolong bucket service life and increase structural integrity.
- Heavy duty floor construction with replaceable high tensile strength steel wear plates.
- Special designs available upon request.
- Available for Class 40-90 machines in 4-14 cyd capacities.



**DYMAX INC** | Toll Free: 800.530.5407 (USA/CAN)  
402 Miller Drive | Office: +1.785.456.2081  
Wamego, KS 66547 USA | Fax: +1.785.456.8328

[www.DYMAXINC.com](http://www.DYMAXINC.com)  
[sales@DYMAXINC.com](mailto:sales@DYMAXINC.com)



**Dymax Long Lip Trash Tamping Bucket** designed to provide operators with ability to reach into floors of trucks to help compact in the transfer station.



This 2.25yd<sup>3</sup> Dymax Refuse bucket with rubber edge is ideal for Front Loader Backhoes working in transfer station applications.

Model #	Description	Weight lb
DX-BK-RF-4.00cyd-WL-40	Bucket – Refuse – 4.00 cyd capacity – Wheel Loader – Class 40	2,100
DX-BK-RF-4.50cyd-WL-40	Bucket – Refuse – 4.50 cyd Capacity – Wheel Loader – Class 40	2,380
DX-BK-RF-5.00cyd-WL-40	Bucket – Refuse – 5.00 cyd capacity – Wheel Loader – Class 40	2,650
DX-BK-RF-5.50cyd-WL-40	Bucket – Refuse – 5.50 cyd capacity – Wheel Loader – Class 40	3,000
DX-BK-RF-6.00cyd-WL-40	Bucket – Refuse – 6.00 cyd capacity – Wheel Loader – Class 40	3,750
DX-BK-RF-4.50cyd-WL-50	Bucket – Refuse – 4.50 cyd Capacity – Wheel Loader – Class 50	3,750
DX-BK-RF-5.00cyd-WL-50	Bucket – Refuse – 5.00 cyd capacity – Wheel Loader – Class 50	4,080
DX-BK-RF-5.50cyd-WL-50	Bucket – Refuse – 5.50 cyd capacity – Wheel Loader – Class 50	4,300
DX-BK-RF-6.00cyd-WL-50	Bucket – Refuse – 6.00 cyd capacity – Wheel Loader – Class 50	4,720
DX-BK-RF-7.00cyd-WL-60	Bucket – Refuse – 7.00 cyd capacity – Wheel Loader – Class 60	3,400
DX-BK-RF-7.50cyd-WL-60	Bucket – Refuse – 7.50 cyd capacity – Wheel Loader – Class 60	3,800
DX-BK-RF-8.00cyd-WL-60	Bucket – Refuse – 8.00 cyd capacity – Wheel Loader – Class 60	4,300
DX-BK-RF-8.50cyd-WL-60	Bucket – Refuse – 8.50 cyd capacity – Wheel Loader – Class 60	4,650
DX-BK-RF-8.50cyd-WL-70	Bucket – Refuse – 8.50 cyd capacity – Wheel Loader – Class 70	6,850
DX-BK-RF-9.00cyd-WL-70	Bucket – Refuse – 9.00 cyd capacity – Wheel Loader – Class 70	7,050
DX-BK-RF-9.50cyd-WL-70	Bucket – Refuse – 9.50 cyd capacity – Wheel Loader – Class 70	7,280
DX-BK-RF-10.00cyd-WL-70	Bucket – Refuse – 10.00 cyd capacity – Wheel Loader – Class 70	7,512
DX-BK-RF-10.00cyd-WL-80	Bucket – Refuse – 10.00 cyd capacity – Wheel Loader – Class 80	7,700
DX-BK-RF-11.00cyd-WL-80	Bucket – Refuse – 11.00 cyd capacity – Wheel Loader – Class 80	8,260
DX-BK-RF-12.00cyd-WL-80	Bucket – Refuse – 12.00 cyd capacity – Wheel Loader – Class 80	8,815
DX-BK-RF-12.00cyd-WL-90	Bucket – Refuse – 12.00 cyd capacity – Wheel Loader – Class 90	8,990
DX-BK-RF-14.00cyd-WL-90	Bucket – Refuse – 14.00 cyd capacity – Wheel Loader – Class 90	9,800
Specifications are subject to change without notice.		



**DYMAXINC** | Toll Free: 800.530.5407 (USA/CAN)  
 402 Miller Drive | Office: +1.785.456.2081  
 Wamego, KS 66547 USA | Fax: +1.785.456.8328

[www.DYMAXINC.com](http://www.DYMAXINC.com)  
[sales@DYMAXINC.com](mailto:sales@DYMAXINC.com)