



### 3-WAY SIDE DUMP BUCKETS

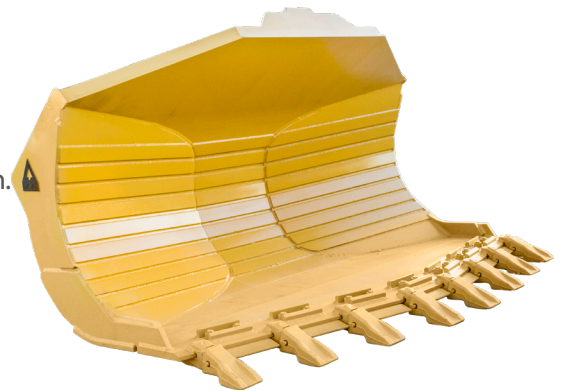
## OVERVIEW

The **Dymax 3 Way Side Dump Bucket** is a heavy duty design that is perfect for tunnel work where the machine must work one side then the other while loading trucks.

To adjust the dump from one side to the other requires removal of 1 pin and placing it on the opposing side.

## FEATURES

- Dumps to either side with special frame system.
- CAT weld on adapters, replaceable tips, bolt-on edge segments with bolt protection.
- AR400 wear liners installed in pocket regions and main moldboard section.
- Heavy duty spill plate.
- 5" bore x 28" stroke heavy duty cylinder.
- Base edge can be either straight or spade nose. Rock model with spade nose includes edge segments and teeth.



Model #	Description	Weight lb	Weight kg
DX-BK-2SD-4.00cyd-WL-80	Bucket, Dual Side Dump (R/L) (4.00cyd - 3.06m <sup>3</sup> )	6,200	2,812
DX-BK-2SD-5.50cyd-WL-90	Bucket, Dual Side Dump (R/L) (5.50cyd - 4.21m <sup>3</sup> )	9,000	4,082
DX-BK-2SD-6.00cyd-WL-90	Bucket, Dual Side Dump (R/L) (6.00cyd - 4.59m <sup>3</sup> )	10,000	4,536

Specifications are subject to change without notice.



**DYMAX INC**  
402 Miller Drive  
Wamego, KS 66547 USA

**Toll Free: 800.530.5407 (USA/CAN)**  
**Office: +1.785.456.2081**  
**Fax: +1.785.456.8328**

**www.DYMAXINC.com**  
**sales@DYMAXINC.com**