



RAILWAY CRIBBING BUCKET

RAILWAY CRIBBING BUCKETS

Railway Cribbing Buckets are a necessity for almost any contractor or railroad working in track maintenance.

DymaxRail Cribbing Buckets are built tough to withstand the wear and tear when working with harsh ballast.

DymaxRail Cribbing Buckets feature high strength cutting edges and are 8 inches wide to allow operators to clean mud and ballast from beneath railties and sleepers. Twin teeth help operators stab and remove rail ties..

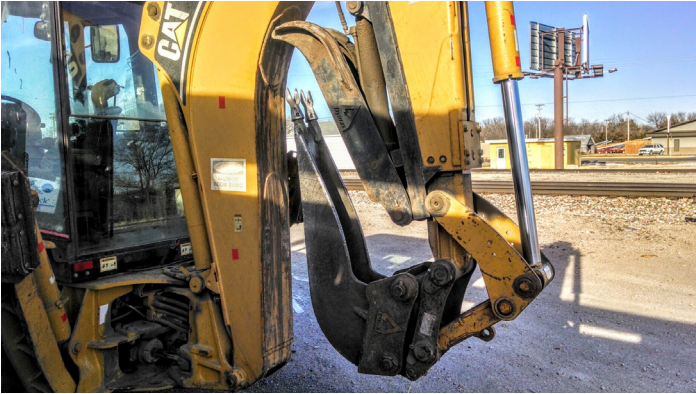
TOUGH DESIGN. BETTER BUILT.

Model ID	Model Code	Description	Weight LBS
100213	DX-BK-CR-8in-BL-10	Bucket – Cribbing – 8 inches wide – Backhoe Loader – Class 10	320
100214	DX-BK-CR-8in-BL-20	Bucket – Cribbing – 8 inches wide – Backhoe Loader – Class 20	320
100216	DX-BK-CR-8in-HX-8T	Bucket – Cribbing – 8 inches wide – Hydraulic Excavator – 08 Ton	320
100218	DX-BK-CR-8in-HX-12T	Bucket – Cribbing – 8 inches wide – Hydraulic Excavator – 12 Ton	640
100222	DX-BK-CR-8in-HX-20T	Bucket – Cribbing – 8 inches wide – Hydraulic Excavator – 20 Ton	665

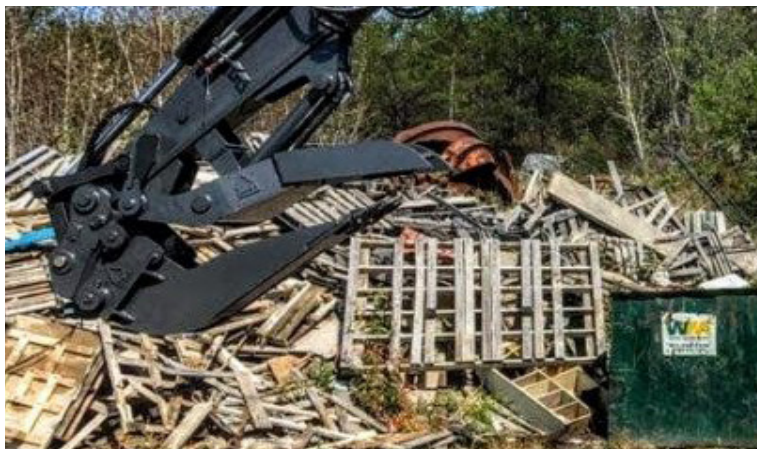
Design and Specifications are subject to change without notice. Contact DymaxRail sales for more information or custom design solutions. All models are fitted with two replaceable adapters and tips. Special connections are available for fitting specialized coupler systems.

TOUGH DIGGING. NO PROBLEM

DymaxRail Cribbing Bucket for 12-14T excavators features more capacity and improved penetration when reaching over the track and working from opposing sides. With a similar shape to ripper teeth the DymaxRail Cribbing Bucket features high strength tensile steel construction and replaceable teeth.



FOR BACKHOES AND EXCAVATORS



Backhoe Loader Cribbing Buckets are available with several tooth kits depending on your requirement. Models are provided with pins for attaching to common pin grab coupler systems. High strength construction and durability.



DymaxRail Cribbing Buckets for excavator machines are 8 inches wide but feature a longer tip radius and are built to last.



DYMAXRAIL | Toll Free: 800.530.5407 (USA/CAN)
402 Miller Drive | Office: +1.785.456.2081
Wamego, KS 66547 USA | Fax: +1.785.456.8328

www.DYMAXRAIL.com
sales@DYMAXRAIL.com