



LIMB TREE SHEARS

JUST A BITE.

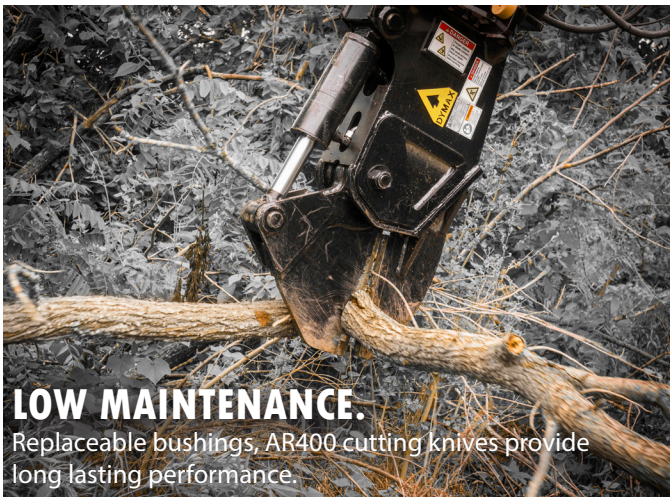
OVERVIEW

The **Dymax Rotating Limb Tree Shear** for Excavators and Backhoe Loaders is extremely efficient in right of way maintenance for railroads and county highway departments.

The small, compact frame allows operators to shear limbs and trees in hard to reach areas. Dymax Rotating Limb Shears are ideal for trimming around power lines and tree pruning using excavators and backhoe loaders.

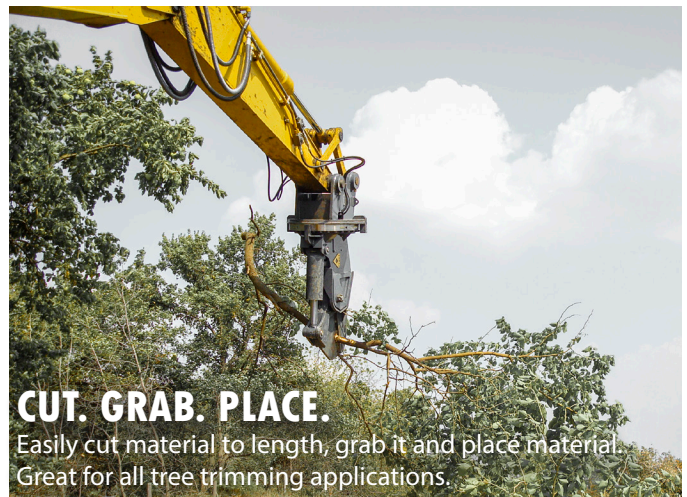
With 180° of hydraulic rotation, these shears will adjust to the limb. And like all Dymax products, they are backed by the highest level of support in the industry. We also offer the same shear without rotation if you a tilting coupler or tiltrotator coupler system.

Dymax Rotating Limb Tree Shears are available in 10" (25cm) or 14" (36cm) capacities.



LOW MAINTENANCE.

Replaceable bushings, AR400 cutting knives provide long lasting performance.



CUT. GRAB. PLACE.

Easily cut material to length, grab it and place material. Great for all tree trimming applications.

FEATURES

- Small compact frame design, which is ideal in hard-to-reach areas.
- Super fast cycle time.
- Heavy duty replaceable shear blade comprised of high tensile steel.
- Hoses and fittings are well protected from abusive elements found in shearing applications.
- 180° hydraulic rotation setup through heavy duty slewing ring bearing for long life.
- 10" or 14" diameter cutting capacity. Custom 20" model available.
- Models require bi-directional (two-way) flow valve arrangement and lines group on excavator main pump. Dymax provides an electro-hydraulic diverter valve kit for operating the rotation positioning. The electro-hydraulic diverter valve kit requires installation of wire, switch, and fuse.
- Dymax Limb Shears feature bolt on top assemblies allowing for interchangeability between various machine manufacturers and sizes.



Machine Size	Model	Description	Cut Capacity in (cm)	Weight lbs (kg)
Backhoe, 8T-11T	DX-TS-RLS-10in	10" Limb Tree Shear, 180° Rotation, for 8 Ton Excavators and Backhoe Loaders	10 (25)	1,500 (680)
12-20T	DX-TS-RLS-14in	14" Limb Tree Shear, 180° Rotation, for 12-20 Ton Excavators	14 (36)	2,800 (1,270)
36-45T	DX-TS-RLS-20in	20" Limb Tree Shear, 180° Rotation, for 36-45 Ton Excavators	20 (50)	5,800 (2,630)

Specifications are subject to change without notice



The Dymax Limb Shear (no rotation) features the same shear design minus the rotation system.

Ideal for fitting specialty couplers such as tilting coupler systems or tiltrotators.



DYMAXINC | Toll Free: 800.530.5407 (USA/CAN)
 402 Miller Drive | Office: +1.785.456.2081
 Wamego, KS 66547 USA | Fax: +1.785.456.8328

www.DYMAXINC.com
sales@DYMAXINC.com