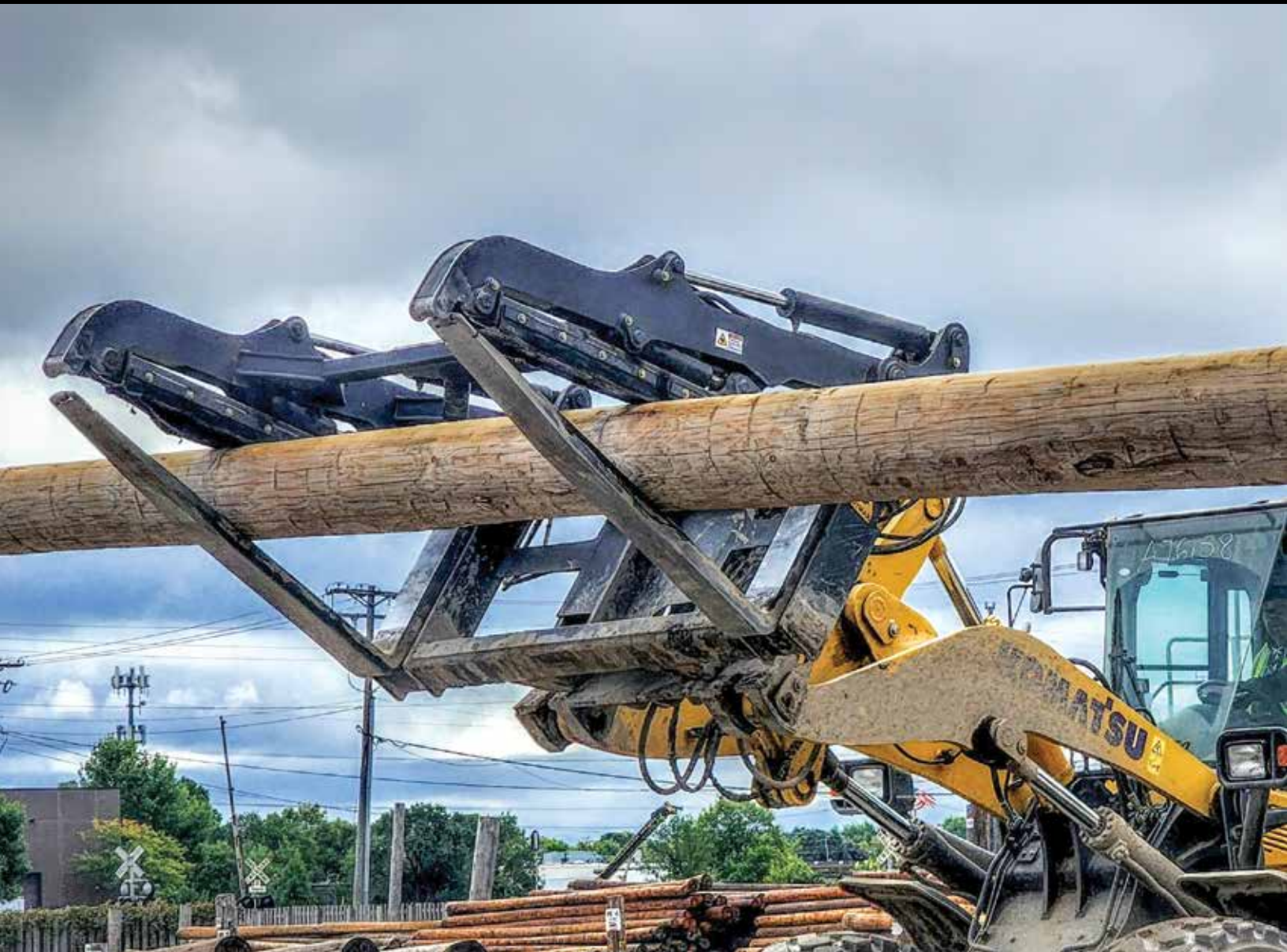


DYMAX SPECIALIZED ATTACHMENTS



MATERIAL HANDLING

FOR LOADERS AND EXCAVATORS

- PIPE & POLE GRAPPLE FORKS
- SPECIALTY & PALLET FORKS
- GRAPPLES
- SPECIALTY BUCKETS

1-800-530-5407 / 785-456-2081

www.DYMAXINC.com



MATERIAL HANDLING ATTACHMENTS

WHEEL LOADER FORKS



**LOAD
SECURED**

PIPE & POLE GRAPPLE FORKS - WHEEL LOADER

Dymax Pipe and Pole Forks with stabilizer clamps are ideal for handling oil field pipe and transmission line poles, whether steel or wood. They feature bolt-on replaceable padding that prevents damage and ensures a tight and safe grip with all materials.

Machine Operating Weight (lbs)	Tine Options Lengths; Tine Size & Capacity Rated @ 24" Load Centers	Clamp Type	Carriage Widths (inches)
Backhoe Loader	60, 72; 2.0 x 6.0 @ 12,600lbs	Slider	72, 84
32,000-38,000	60, 72; 3.0 x 6.0 @ 28,400lbs	Dual	72, 84
40,000-47,000	72, 84; 3.0 x 7.0 @ 34,200lbs	Dual	84, 90, 96
48,000-56,000	84, 96; 3.0 x 8.0 @ 37,000lbs	Dual	90, 96
66,000-80,000	96; 3.50 x 8.0 @ 54,600lbs	Dual	112
Design and specifications are subject to change without notice. Please contact Dymax for custom solutions 1-800-530-5407.			



DUAL CLAMPS



**SLIDER CLAMPS
BACKHOE LOADER**

MATERIAL HANDLING ATTACHMENTS

DEMAND DYMAX FOR DURABILITY

SPECIALTY FORKS WITH CLAMPS - WHEEL LOADER



**LOG & LUMBER FORK
WITH DUAL CLAMPS**
WHEEL LOADER



**LOG & LUMBER FORK
WITH MILLYARD CLAMP**
WHEEL LOADER



MILLYARD FORK
WHEEL LOADER



**SORTING
FORK**

MATERIAL HANDLING ATTACHMENTS

WHEEL LOADER FORKS

PALLET FORKS SHAFT MOUNTED - NON SWING TINES



PALLET FORKS WITH HYDRAULIC TINES - WHEEL LOADER



Machine Operating Weight (lbs)	Tine Options Lengths; Tine Size & Capacity Rated @ 24" Load Centers	Carriage Widths (inches)
20,000-24,000	60, 72; 2.0 x 6.0 @ 12,600lbs	60, 72, 84
26,000-31,500	60, 72, 84; 2.5 x 6.0 @ 21,400lbs	60, 72, 84, 96
32,000-38,000	60, 72, 84; 3.0 x 6.0 @ 28,400lbs	60, 72, 84, 96
40,000-47,000	72, 84, 96; 3.0 x 7.0 @ 34,200lbs	72, 84, 96, 108
48,000-56,000	72, 84, 96; 3.0 x 8.0 @ 37,000lbs	96, 108, 120
Design and specifications are subject to change without notice. Please contact Dymax for custom solutions 1-800-530-5407.		

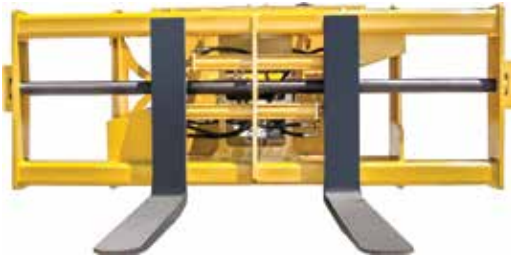


US: 1-800-530-5407 | WORLDWIDE: 1-785-456-2081 | sales@DYMAXINC.com

MATERIAL HANDLING ATTACHMENTS

DEMAND DYMAX FOR DURABILITY

PALLET FORKS WITH SIDE SHIFT CARRIAGE - WHEEL LOADER



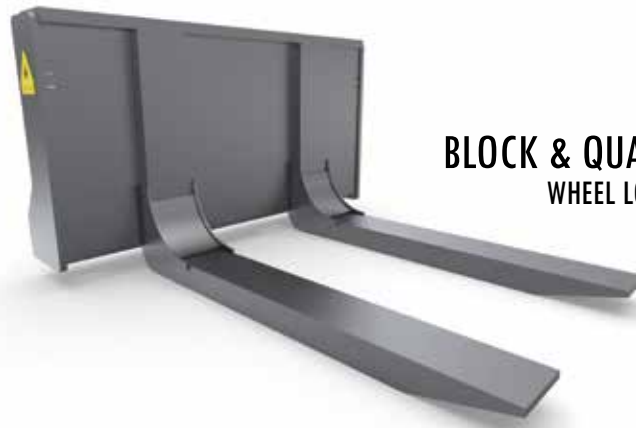
Machine Operating Weight (lbs)	Tine Options Lengths; Tine Size & Capacity Rated @ 24" Load Centers	Carriage Widths (inches)
26,000-31,500	60, 72; 2.5 x 6.0 @ 21,400lbs	84, 96
32,000-38,000	72, 84; 3.0 x 6.0 @ 28,400lbs	84, 96
40,000-47,000	72, 84, 96; 3.0 x 7.0 @ 34,200lbs	84, 96

Design and specifications are subject to change without notice. Please contact Dymax for custom solutions 1-800-530-5407.



LOG FORKS - NO CLAMP
WHEEL LOADER

HEAVY DUTY HYDRAULIC
ADJUSTABLE TINES
WHEEL LOADER



BLOCK & QUARRY FORKS
WHEEL LOADER

LEGENDARY FORK GURUS



US: 1-800-530-5407 | WORLDWIDE: 1-785-456-2081 | sales@DYMAXINC.com

MATERIAL HANDLING ATTACHMENTS

DYMAX SPECIALTY GRAPPLES



GET A GRIP
STONE GRAPPLES

6-16T EXCAVATORS

ROTATION GRAPPLES - EXCAVATORS 5T-36T & BACKHOES

C&D GRAPPLE



MODEL
DX-GL-CDBW-360

MULTI-APPLICATION



MODEL
DX-GL-MA-360

BASKET TINE



MODEL
DX-GL-BSKT-HX

LOGGING BYPASS



MODEL
DX-GL-LGPG-HX
DX-GL-LGCP-HX

FORESTRY HD



MODEL
DX-GL-FYHD-HX



US: 1-800-530-5407 | WORLDWIDE: 1-785-456-2081 | sales@DYMAXINC.com

MATERIAL HANDLING ATTACHMENTS

TOP-NOTCH ATTACHMENTS SINCE THE 1930S

C&D GRAPPLES - WHEEL LOADERS



FEATURES

- 180° ROTATION
- 2 OVER 3 BOX WELD TINES
- HEAVY DUTY CYLINDERS
- COUPLER OR PIN ON LUGGING



ORDINANCE & DEMINING Multi-application grapples

GRAB N GRIP BUCKETS - EXCAVATOR



CLAM BUCKETS - EXCAVATOR



STILL BUILT LIKE GRANDPA TAUGHT US
A Balderson family tradition since 1930



THE BALDERSON FAMILY LEGACY

More than a Century of Commitment

What's in a name? Sometimes not much. Often everything. Dymax was born amidst the values and beliefs of the Balderson family. It's a name that has long stood for quality, integrity and service.

We've been working with iron and steel for more than 135 years. In the early days it was as simple as repairing wagons, shodding horses and performing basic blacksmithing tasks in and around the small community of Wamego, Kansas. As time evolved, so did machines and so did we. Yet one thing remained the same – our family tradition of providing the highest quality, best engineered solutions to meet customers' needs. We stand behind what we build and always drive toward building it even better. The world has changed since Seth Balderson opened his blacksmith shop in 1875, yet our family creed remains intact:

WE TREAT EVERY CUSTOMER AS IF THEY WERE OUR ONLY CUSTOMER!



WWW.DYMAXINC.COM

402 MILLER DRIVE | PO BOX 297 | WAMEGO, KS | 66547 | USA
US: 1-800-530-5407 | WORLDWIDE: 1-785-456-2081 | FAX: 1-785-456-8328