

OVERVIEW

Grab, sort and load more trash! The Dymax Trash Grapple attachment features a gearless rotator, single pivot and 2 over 3 intersecting tine construction. The tines are made of solid steel with replaceable tips. (Esco or Cat teeth)

STANDARD FEATURES:

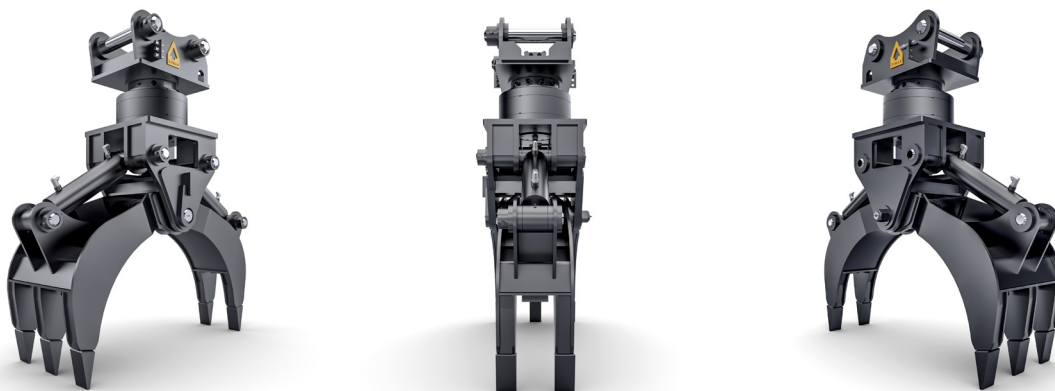
- Solid T1 steel tines with replaceable tips
- 3.5 x 12.0 hydraulic cylinders
- Gearless rotation system
- 48.0 inch opening between tines

OPTIONS:

- 12/24v electro valve kit with wire, switch and fuse kit



Model Code	Description	Weight
DX-GL-TRSH-360-HX-13T	Grapple-Trash Refuse-360 degrees rotation-Hydraulic Excavator-13 ton	1880 lbs
<p>Hydraulic Requirements: Your machine requires (1x) hydraulic circuit for operating this attachment. The grapple is provided with an electro-hydraulic diverter valve mounted to the grapple. Installation of 2-wire cable is required. CIRCUIT 1: Grapple Open and Close. GPM Flow Rate: 10-20 GPM. PSI Pressure: 3,000 max psi. CIRCUIT 2: Rotator. GPM Flow Rate: 8-10 GPM. PSI Pressure: 3,000 max psi. If your machine does not have a 2nd circuit for powering the rotation system, please contact Dymax. We can provide an electro-hydraulic valve kit. Kits are priced separately. NOT SUPPLIED: Jumper hose assembly to and from machine lines.</p> <p>Design and specifications are subject to change without notice. Please contact Dymax sales for custom solutions: 1-800-530-5407.</p>		



DYMAX INC | Toll Free: 800.530.5407 (USA/CAN)
 402 Miller Drive | Office: +1.785.456.2081
 Wamego, KS 66547 USA | Fax: +1.785.456.8328

www.DYMAXINC.com
sales@DYMAXINC.com