

OVERVIEW

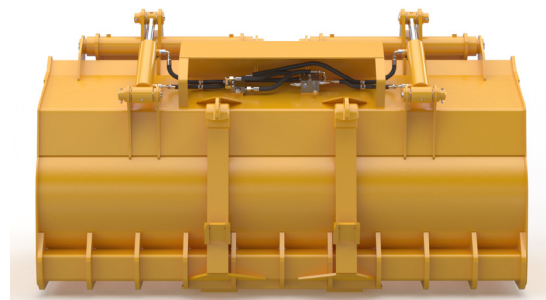
FOR WHEEL LOADERS & BACKHOE LOADERS

Built for heavy-duty sorting and handling, the **Dymax Skeleton Floor Grapple Bucket** is designed to separate materials efficiently while keeping larger loads secure. The T1 steel tine floor lets finer material fall through, reducing unnecessary weight. With durable side plates, bolt-on cutting edges and reinforced heel wear plates, this bucket is ideal for demanding applications such as land clearing, demolition and debris handling.



KEY FEATURES

- T1 steel constructed tine floor allows unwanted material to fall through. Wheel loader models: 10 inch tine spacing. Backhoe loader models: 6 inch tine spacing.
- Full side plates and replaceable bolt-on cutting edges.
- Heavy duty cylinders, pins and bushings.
- Dual clamps with relief and counterbalance valves.
- T1 steel bottom heel wear plates on wheel loader models.
- Available in widths ranging from 96-120 inches, subject to machine size and capacity.



Model Code	Description	Weight
DX-BK-GLSK-1.25cyd-BL-10	Bucket-Grapple with Skeletal Floor-1.25 cyd capacity-Backhoe Loader-Class 10	1950 lbs
DX-BK-GLSK-2.50cyd-WL-40	Bucket-Grapple with Skeletal Floor-2.50 cyd capacity-Wheel Loader-Class 40	4000 lbs
DX-BK-GLSK-3.00cyd-WL-50	Bucket-Grapple with Skeletal Floor-3.00 cyd capacity-Wheel Loader-Class 50	4800 lbs
DX-BK-GLSK-4.00cyd-WL-60	Bucket-Grapple with Skeletal Floor-4.00 cyd capacity-Wheel Loader-Class 60	5250 lbs
DX-BK-GLSK-4.50cyd-WL-60	Bucket-Grapple with Skeletal Floor-4.50 cyd capacity-Wheel Loader-Class 60	5150 lbs
DX-BK-GLSK-5.00cyd-WL-60	Bucket-Grapple with Skeletal Floor-5.00 cyd capacity-Wheel Loader-Class 60	5450 lbs

Hydraulic Requirements

Your machine will require 3rd function auxiliary lines.

CIRCUIT 1: Clamp Operation. Type: Two way. Flow/Pressure: GPM (min/max) 15-25, PSI (max) 3,000

NOT SUPPLIED: Does not include jumper hoses to machine lines or quick disconnects.

Design and specifications are subject to change without notice. Please contact Dymax sales for custom solutions: 1-800-530-5407.



DYMAX INC | Toll Free: 800.530.5407 (USA/CAN)
 402 Miller Drive | Office: +1.785.456.2081
 Wamego, KS 66547 USA | Fax: +1.785.456.8328

www.DYMAXINC.com
sales@DYMAXINC.com