

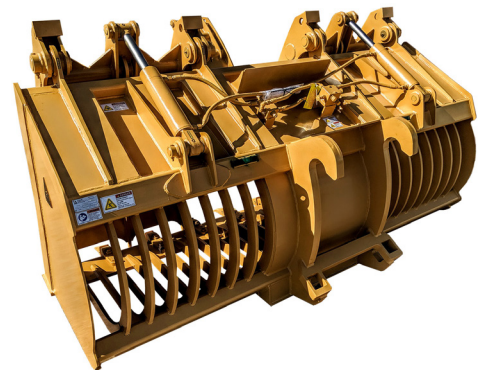
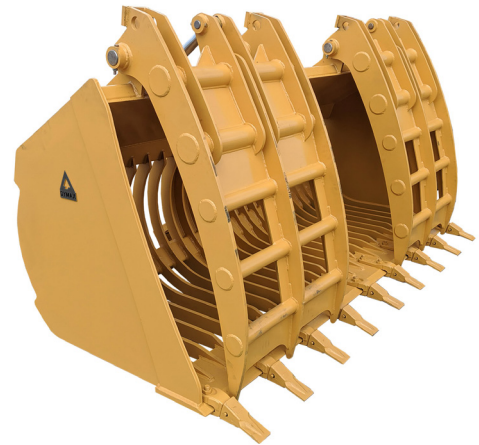
### SKELETON ROCK GRAPPLE BUCKET - FOR WHEEL LOADERS

## OVERVIEW

The **Dymax Skeleton Rock Grapple Bucket** excels in sorting, sifting and securing tough materials such as cement, debris and pipes. Featuring dual grapples for enhanced control and a durable T1 steel tine construction, this bucket is ideal for construction, recycling, and demolition operations.

## KEY FEATURES

- Dual independent grapples provide secure handling of large, irregularly shaped materials.
- T1 high-strength steel tines with 4-inch spacing for efficient sifting and sorting.
- Equipped with replaceable Caterpillar-style bolt-on adapters and tips for extended service life.
- Side profile optimized for handling pipe materials, making it versatile for various applications.
- Available in capacities ranging from 2.50 to 4.50 cubic yards, with widths up to 100 inches.



Model Code	Description	Weight
DX-BK-SRGL-2.50cyd-WL-40	Bucket-Skeleton Rock Grapple-2.50 cyd capacity-Wheel Loader-Class 40	4200 lbs
DX-BK-SRGL-3.00cyd-WL-50	Bucket-Skeleton Rock Grapple-3.00 cyd capacity-Wheel Loader-Class 50	4400 lbs
DX-BK-SRGL-4.50cyd-WL-60	Bucket-Skeleton Rock Grapple-4.50 cyd capacity-Wheel Loader-Class 60	5800 lbs

### Hydraulic Requirements

Your machine will require 3rd function auxiliary lines.

CIRCUIT 1: Clamp Operation. Type: Two way. Flow/Pressure: GPM (min/max) 15-25, PSI (max) 3,000

NOT SUPPLIED: Does not include jumper hoses to machine lines or quick disconnects.

Design and specifications are subject to change without notice. Please contact Dymax sales for custom solutions: 1-800-530-5407.



**DYMAX INC** | Toll Free: 800.530.5407 (USA/CAN)  
 402 Miller Drive | Office: +1.785.456.2081  
 Wamego, KS 66547 USA | Fax: +1.785.456.8328

[www.DYMAXINC.com](http://www.DYMAXINC.com)  
[sales@DYMAXINC.com](mailto:sales@DYMAXINC.com)