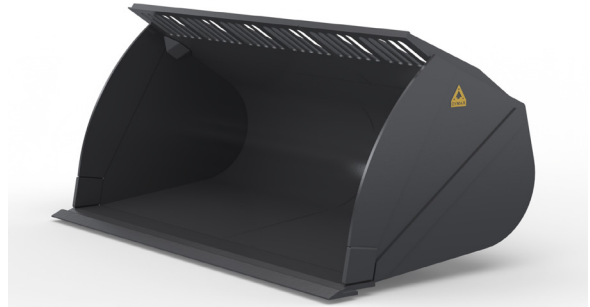


## OVERVIEW

The **Dymax Sugar Beet Bucket** is designed to make handling bulk sugar beets easier and more efficient. The 6-degree wedge floor helps improve material flow and reduces spillage, while the extended spill rack keeps the load secure. Built for durability, it features high-strength side cutters and reinforced gusseting in key areas. Whether you're loading or transporting, this bucket offers the strength and performance you need for sugar beet operations.

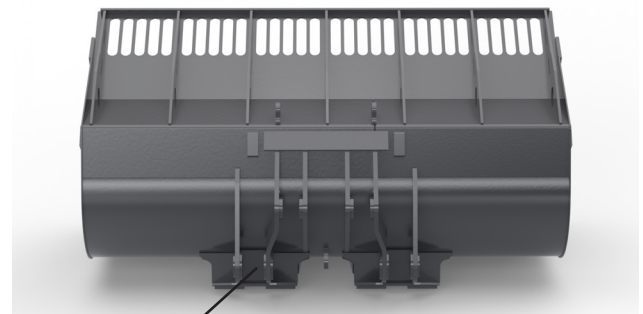


## KEY FEATURES

- High strength T1 steel straight side cutters and wear plates.
- Includes weld-on half arrow style cutting edge to reduce beet damage.
- Rear weld-on wear plates.

## OPTIONS

- Pin-on lugging
- Quick coupler hooks
- Custom widths to better meet job requirements



Replaceable wear pads

Model Code	Description	Machine Size Reference	Weight (lbs)
DX-BK-LMSB-8.50x132-WL-80	Bucket-Light Material Sugar Beet-8.50 cubic yard capacity x 132 inches overall width-Wheel Loader-Class 80	Cat 966 / Deere 744 / Komatsu WA450	6,200
DX-BK-LMSB-9.00x132-WL-80	Bucket-Light Material Sugar Beet-9.00 cubic yard capacity x 132 inches overall width-Wheel Loader-Class 80	Cat 972 / Deere 824 / Komatsu WA470/480	6,500
DX-BK-LMSB-10.80x144-WL-90	Bucket-Light Material Sugar Beet-10.80 cubic yard capacity x 144 inches overall width-Wheel Loader-Class 90	Cat 980 / Deere 844 / Komatsu WA500	8400
DX-BK-LMSB-11.25x144-WL-90	Bucket-Light Material Sugar Beet-11.25 cubic yard capacity x 144 inches overall width-Wheel Loader-Class 90		8650

Design and specifications are subject to change without notice. Please contact Dymax sales for custom solutions: 1-800-530-5407.



**DYMAX INC** | Toll Free: 800.530.5407 (USA/CAN)  
 402 Miller Drive | Office: +1.785.456.2081  
 Wamego, KS 66547 USA | Fax: +1.785.456.8328

[www.DYMAXINC.com](http://www.DYMAXINC.com)  
[sales@DYMAXINC.com](mailto:sales@DYMAXINC.com)