

FIFTH WHEEL QUICK COUPLER**OVERVIEW**

Fits:	Wheel Loaders & 3 point Tractors
Connection:	Quick Coupler or Direct Pin
Hydraulics:	Requires only 1 auxiliary circuit
Coupler Lock:	Manual
Installation:	Attaches to existing coupler system or 3 point hitch

WHAT IT IS?

The **Dymax Fifth Wheel Quick Coupler** transforms your front-end loader or tractor into a versatile trailer spotting and material handling machine.

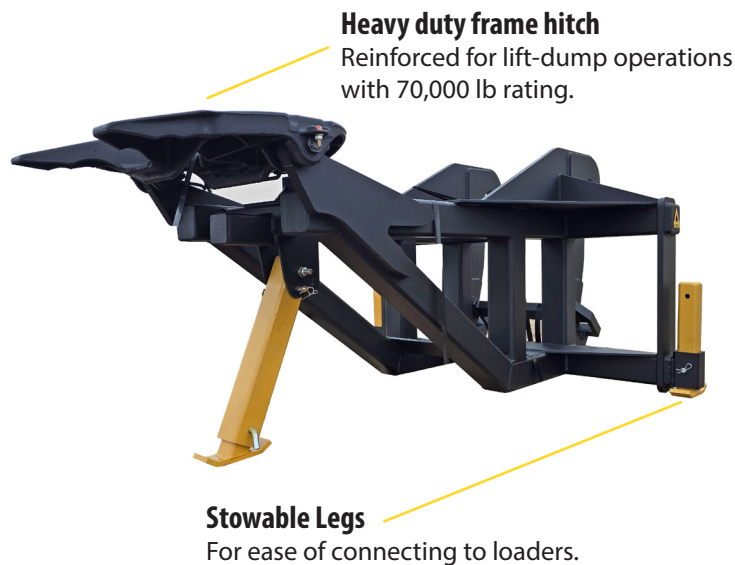
Unlike light-duty spotting hitches, this heavy-duty wheel loader attachment has a reinforced frame that allows operators to lift, move, and unload container beds, van bodies, and trailer-mounted equipment more efficiently.

APPLICATIONS

- **Rail & Intermodal Yards** - Spot and reposition container trailers and equipment.
- **Oil & Gas Fields**- Ideal for mowing, ditch cleaning and roadside work.
- **Mine, Quarry, Construction & Demolition Sites** - Reposition equipment trailers and offload aggregate bins.
- **Port & Recycling Facilities** - Transfer van bodies, roll-offs and containers for dumping.

KEY BENEFITS

- Heavy duty frame built tougher with higher strength pivot mounts.
- Full load support engineered for additional structural strength during raised loading operations.
- Quick hitch adaptable for fast connection.
- Versatile for handling worksite van bodies, trailers, ISO container trailers and more.



See what you're moving
Open carriage design for maximum visibility.

Model Code / Group No. Description	Weight (lbs)
WHEEL LOADER	
DX-QC-5TH-70K-WL-80; GN REF 8414D1 Quick Coupler-Fifth Wheel Hitch-70,000 lb capacity-Wheel Loader-Class 80 (Cat 966/972, Deere 744, Komatsu WA480)	2,200
DX-QC-5TH-70K-WL-90 Quick Coupler-Fifth Wheel Hitch-70,000 lb capacity-Wheel Loader-Class 90 (Cat 980, Deere 844, Komatsu WA500)	3,000
DX-QC-5TH-70K-WL-100 Quick Coupler-Fifth Wheel Hitch-70,000 lb capacity-Wheel Loader-Class 100 (Cat 988, Deere 944, Komatsu WA600)	3,250
3 POINT HITCH TRACTORS	
DX-QC-5TH-70K-TR-3PT; GN REF7188D1 Quick Coupler-Fifth Wheel Hitch-70,000 lb capacity-Tractor-3 Point Hitch	1,450

Design and specifications are subject to change without notice.



DYMAXINC | Toll Free: 800.530.5407 (USA/CAN)
402 Miller Drive | Office: +1.785.456.2081
Wamego, KS 66547 USA | Fax: +1.785.456.8328

www.DYMAXINC.com
sales@DYMAXINC.com