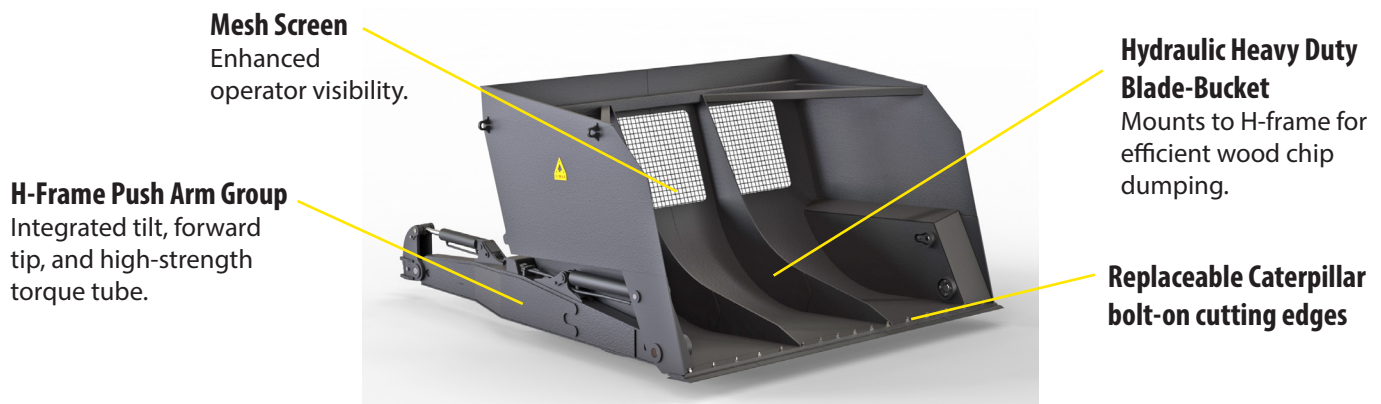


WOOD CHIP SCOOP FOR WHEEL DOZERS**OVERVIEW**

The **Dymax Wood Chip Scoop** is a purpose-built attachment designed for efficient wood chip handling at biomass power plants, paper mills, and wood processing facilities. Built to combine the best of a rollout bucket and a dozer blade, it enhances machine productivity and chip pile management.

- **Fits:** Wheel dozers such as Cat 824 and Cat 834
- **Lift & Carry Capacities:** Up to 39.5 yd³
- **Doze Capacities:** Up to 65 yd³
- **Connection:** H-frame push group with bucket group
- **Edges:** Replaceable Cat pattern cutting edges
- **Customized:** Get the right size for your application.

HEAVY-DUTY BLADE-BUCKET FOR BIOMASS & POWER PLANT APPLICATIONS

GET THE BIGGEST YARD WITH DYMAX CHIP SCOOPS



**Fill blade to capacity
and push**

**Lift and dump woodchips with
precision placement for efficient
pile management.**

SPECIFICATIONS

Machine	Group No.	Model Code	Description	Weight
Caterpillar 824	5685D1	DX-BL-WCSC-17.5x13ft4-WD-20	Blade-Wood Chip Scoop-17.50 cubic yard capacity x 13 feet 4 inches wide-Wheel Dozer-Class 20	15,500 lbs
Caterpillar 834	8258D	DX-BL-WCSC-39.5x16ft-WD-30	Blade-Wood Chip Scoop-39.50 cubic yard capacity x 16 feet wide-Wheel Dozer-Class 30	23,500 lbs

Design and specifications are subject to change without notice.



DYMAXINC
402 Miller Drive
Wamego, KS 66547 USA
Toll Free: 800.530.5407 (USA/CAN)
Office: +1.785.456.2081
Fax: +1.785.456.8328

www.DYMAXINC.com
sales@DYMAXINC.com